



# Kyoto Prefectural International Center

## NEWS

Vol.91  
Spring 2020

### Table of contents:

■ Establishing regional Japanese language education systems in Kyoto Prefecture .....	p.1-3
■ Japanese language support volunteer training course .....	p.3
■ Information from KPIC .....	p.4

## Establishing regional Japanese language education systems in Kyoto Prefecture ~From the results of a fact finding survey regarding "Regional Japanese language education"~

At this center, in order to make clear the Japanese language education needs and issues facing international residents within the prefecture, we conducted a survey aimed towards international residents, Japanese residents, municipalities, regional Japanese language classes, and businesses. This was conducted last year (2019) from the period of July to November.

We are grateful to all the people who were able to take the time in order to assist us in answering this survey.

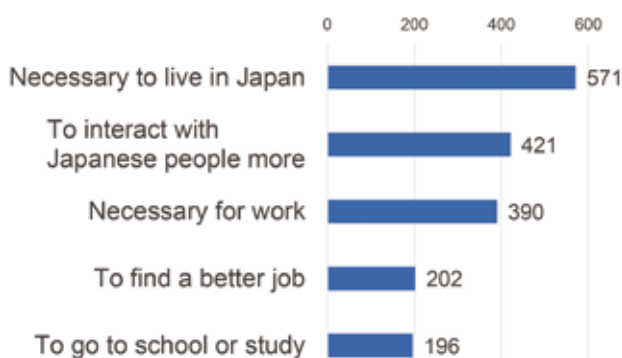
Taking into account the results of this survey, Kyoto Prefecture has devised the "Regional Japanese language education promotion plan", as a guideline, which was settled in December of last year. From now and for the next 5 years we will be actively promoting a myriad of policies regarding regional Japanese language education.

At this center we have been training Japanese language support volunteers with the model Japanese language classes that we have worked hard on thusfar, and going forwards we will continue to support the launch of regional Japanese language classes.

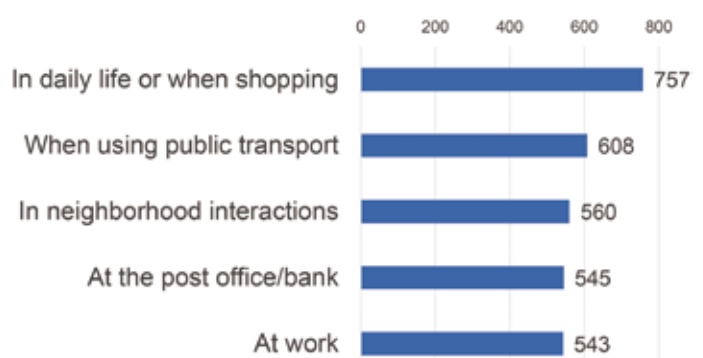
### International Residents questionnaire results

(Total number of respondents:875, \*:Includes multiple answers)

#### ■ Why are you studying Japanese? (N=744\*) "For daily life" was the most popular response



#### ■ In which situations do you use Japanese? (N=868\*) Used mostly in daily life and when traveling etc.

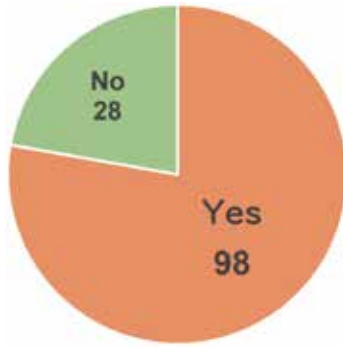


#### ■ How are you studying Japanese? (N=746\*) Studying through self-study or Japanese language classes

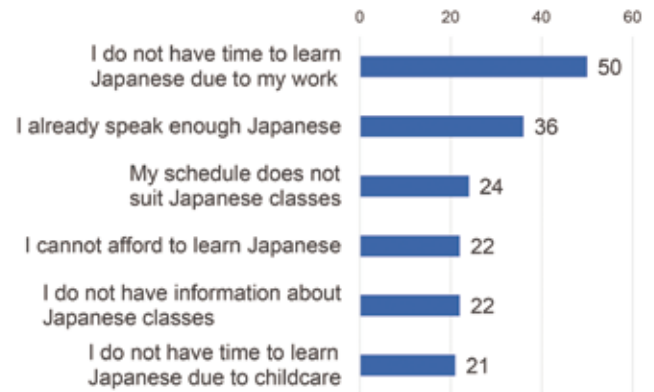
①Self-study (textbooks, TV, etc.)	376	④Paid Japanese language class	265
②Self-study (online resources, apps, etc.)	328	⑤From listening to conversation around me	262
③Free Japanese language class	287		



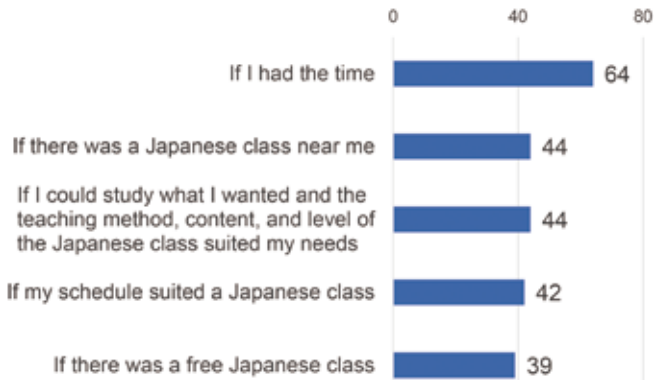
■ (Regarding those who are not studying Japanese)  
**Do you want to study Japanese? (N=126)**  
**Approximately 80% indicated "Yes"**



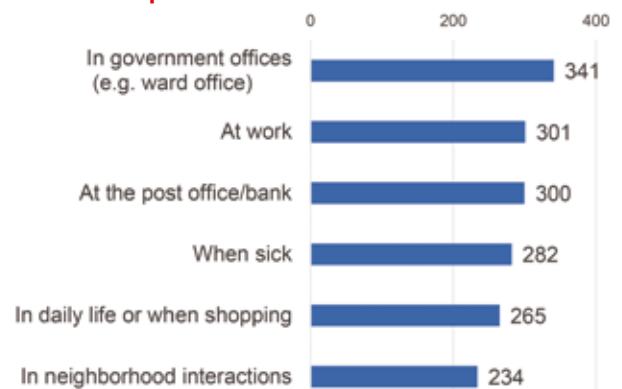
■ **Why are you not currently studying Japanese? (N=126\*)**  
**"I don't have the time" was the most popular response**



■ **Under what kind of circumstances might you like to learn Japanese? (N=126\*)**  
**A set time, place and contents are the most wanted circumstances**



■ **Problems you have had in the last year due to Japanese language difficulties (N=868\*)**  
**At government offices, workplaces and with various procedures are where respondents have had the most trouble**



■ **Did you know that the municipality where you live provides information about evacuations when a natural disaster occurs? (N=866)**

**For international residents, language barriers are also leading to isolation during disasters**



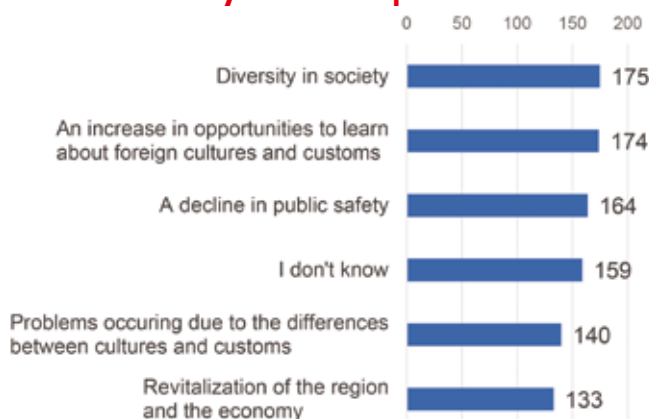
Yes, and I can understand the information too	297
I did not know this	260
Yes, but I cannot understand the information because it is in Japanese	164
Yes, but I do not know how to access this information	145



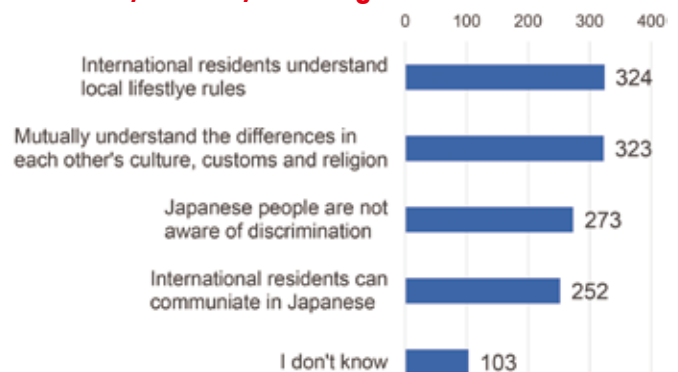
**Japanese Residents questionnaire results**

(Number of respondents: 600, multiple answers)

■ **What do you think about the increase of international residents in local areas?**  
**There are many favorable opinions**



■ **What is necessary for Japanese people and international residents to coexist and to foster mutual understanding?**  
**Understanding the differences in lifestyle rules, cultures, customs, and religion**



# Settlement of the “Regional Japanese Language Education Plan” in Kyoto Prefecture

## [Outline of the Plan]

### ▶ Main goal of the policy

In recognizing that the number of international residents within the prefecture is going to continue to increase, and in order to realize a society of multicultural coexistence so that these international residents can actively participate as members of society, the national government, municipalities, businesses and related organizations will collaborate to continue an initiative for the establishment of regional Japanese language education systems.

### ▶ Present conditions and challenges

- There are 10 municipalities that do not have any Japanese language classes, alongside incidences of people who are on waiting lists to join such classes. Due to a lack of learning spaces, and limited opening times and days, we cannot say that there is a well realized learning environment.
- The majority of learning supporters are volunteers, and alongside this we are tackling issues such as securing a sufficient number of language supporters, most current language supporters being elderly, and providing these supporters with proper compensation for their work. There is also a necessity for learning supporters with more advanced skills to properly support beginner learners.
- Many international residents wish to study the Japanese language, but with limitations on time and money and insufficient information as major reasons for not being able to study, there is a necessity to prepare a Japanese language learning environment that addresses these issues.

“Regional Japanese Language Education Plan”  
(Kyoto Prefecture International Affairs Division)



## ▶ Fundamental directions of the policy

### ① Securing learning opportunities

- Establishing Japanese language classes in areas that do not yet have any
- Eliminating waiting lists to attend classes
- Offering specialist guidance opportunities

#### Specific measures

- Support for the opening of new Japanese classes
- Arrangement for coordinators of regional Japanese language education
- Creation of specialty locations for beginner Japanese language study

### ② Enrichment of learning environments

- Securing learning supporters and foster their talents
- Providing assistance for sustainable classroom management
- Increasing the number of students

#### Specific measures

- Training for learning supporters
- Creating a network of Japanese language classrooms
- Creating a framework for sustainable Japanese language classrooms
- Support for the provision of information

### ③ Coordinating with regions

- Realization of the internationalization and stimulation of regionalities and multicultural coexistence

#### Specific measures

- Promotion of exchanges with regions
- Lifestyle support, disaster prevention, and support for interpretation/translation needs
- Coordinating with businesses/related organizations etc.

## Activity report

# Japanese language support volunteer training course

In Kyoto Prefecture, within the 16 municipalities there are 26 Japanese language classes, and in each area there are volunteers who carry out language support activities for international residents.

Aimed at those who would like to start support activities for the learning of the Japanese language, we are opening a “Japanese language support volunteer training course.”

In 2019 in Joyo, Kumiyama, and Nantan, the local municipal governments and international exchange associations cooperated to carry out such a course.

In the 8 municipalities that have conducted such courses thus far, with a focus on those who have completed the course, there has been the opening of new Japanese language classes alongside a reduction in the insufficient numbers of supporters at each of the classes.





# INFORMATION FROM KPIC

## Map of Japanese Classes in Kyoto for International Residents

At our center, we have created a map of Japanese classes in Kyoto Prefecture for international residents, where information regarding Japanese classes is summarized and listed on a map.

It is available in four different languages: English, Chinese, Korean and Filipino. We distribute these maps for free at the Center's Reception Desk.

You can also view it online by visiting:

[https://www.kpic.or.jp/english/learning\\_japanese/japanese\\_class.html](https://www.kpic.or.jp/english/learning_japanese/japanese_class.html)



## At KPIC: Japanese classes for international residents

Period:

### 1 Regular Course (Every Monday and Thursday)

May 14 (Thu) – July 20 (Mon), 2020

### 2 Conversation Course (Every Saturday)

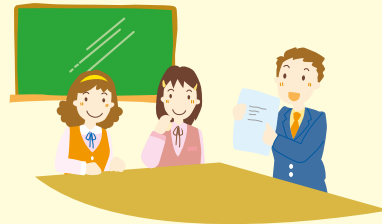
May 16 (Sat) – July 18 (Sat), 2020

■Time: 10:30 – 12:45

■Course fee: ①6,000yen for 20 sessions ②4,000yen for 10 sessions

\*In response to the novel coronavirus, there is the possibility of suspensions or postponements.

For more information, visit: [https://www.kpic.or.jp/english/learning\\_japanese/japanese\\_course/index.html](https://www.kpic.or.jp/english/learning_japanese/japanese_course/index.html)



## CONSULTATION SERVICES for Kyoto's International Residents

Free of charge

### Living Consultation Desk

[www.kpic.or.jp/english/information/livingconsultation.html](http://www.kpic.or.jp/english/information/livingconsultation.html)

Please feel free to consult us regarding any troubles related to your daily life such as children's education, childbirth, welfare, medicine and healthcare, employment.

**Languages** : English, Chinese, Korean, Vietnamese, Thai, Portuguese, Spanish

**Consultation hours** : 10:00-17:00

(Excluding closed days)

**TEL** : 075-343-9666

### Support Desk for International Students

[www.kpic.or.jp/ryugaku/soudan.html](http://www.kpic.or.jp/ryugaku/soudan.html) (Japanese only)

Our counseling staff can give you information and advice for daily life, preparation for jobs, contacts with graduates working in Japan, etc.

**Reservation required.**

**Consultation hours** : 10:00-17:00 (Wed., Sat., Sun.)

**E-mail** : [counsel@kpic.or.jp](mailto:counsel@kpic.or.jp)

**TEL** : 075-342-0088

### Visa Consultation

[www.kpic.or.jp/english/information/counseling.html](http://www.kpic.or.jp/english/information/counseling.html)

An expert can respond to your visa-related questions including those about changing or renewing your status of residence. Please make a reservation at least one week in advance through the online.

**Consultation hours** : 13:00-16:00 (Fourth Sunday of every month)

30 minutes/person

**To Apply** : [www.kpic.or.jp/ryugaku/soudan/visa/appli01.html](http://www.kpic.or.jp/ryugaku/soudan/visa/appli01.html)

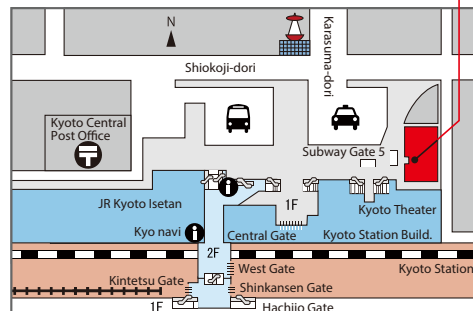
## Living Info by Email

We send email messages full of useful living information twice a month. Please send your choice of language (English, Chinese, Filipino, Japanese or Easy Japanese) to:

[living-e@kpic.or.jp](mailto:living-e@kpic.or.jp)



### Access information



Open hours : 10:00-18:00

Closed : 2nd and 4th Tuesday of every month, national holidays, 12/29-1/3

## Kyoto Prefectural International Center

B1F Mielparque Kyoto building, 676-13 Higashi shiokoji-cho, Shimogyo-ku, Kyoto 600-8216, Japan

**Tel** : 075-342-5000

Fax : 075-342-5050

E-mail : [main@kpic.or.jp](mailto:main@kpic.or.jp)

<http://www.kpic.or.jp/>



**facebook**

<https://www.facebook.com/kpic.kyoto>